



# Aakar *Parkview*

[www.aakarproperties.com](http://www.aakarproperties.com)



**Aakar Properties**  
*Concept to Creation*

# 17/2, "Gourav Residency", 12th Cross, V. V. Mohalla, Mysore - 570 002.



# Welcome to Aakar Properties

A company with a philosophy of innovation and excellence in delivery from concept to creation, built by professionals with core and to last. We are committed to fulfill the dreams of our customers with its unique design, high quality and schedule adherence.



## About *Aakar Parkview*

Presenting Aakar Parkview consisting of 9 spacious 2 bed room apartment built at 3 levels and located in one of the prestigious layout at Vijaynagar 2nd stage with close proximity to all major amenities like Hospitals, Schools, Super markets, Colleges and major corporates like Infosys, L&T, SPI etc., Each apartment is indigenously designed with a Futuristic Vision & Vastu compliance ranges from 1197 to 1263 sq.ft. Aakar Parkview offers an international urban lifestyle. The site layout is surrounded by ample greens and has been planned to ensure maximum usage of floor area with adequate light and ventilation in the apartments. The land is owned by Aakar properties and the building plan is approved by MCC.

### **Disclaimer:**

Aakar Properties reserves the rights to alter the plans. This brochure is for illustration purpose and should be used as a guide only. No information or images from this brochure maybe reproduced without prior written approval from the owner.

## Amenities

- Vastu Compliant
- Gym (Terrace)
- Party Hall (Terrace)
- Landscaping & Children's Play Area
- Provision for Cable TV
- Rainwater harvesting as per norms
- CCTV provided at Entrance
- 24X7 Power backup for Lift & common area.
- Intercom facility to each apartment from main entrance.



TYPICAL GROUND /FIRST/SECOND FLOOR PLAN



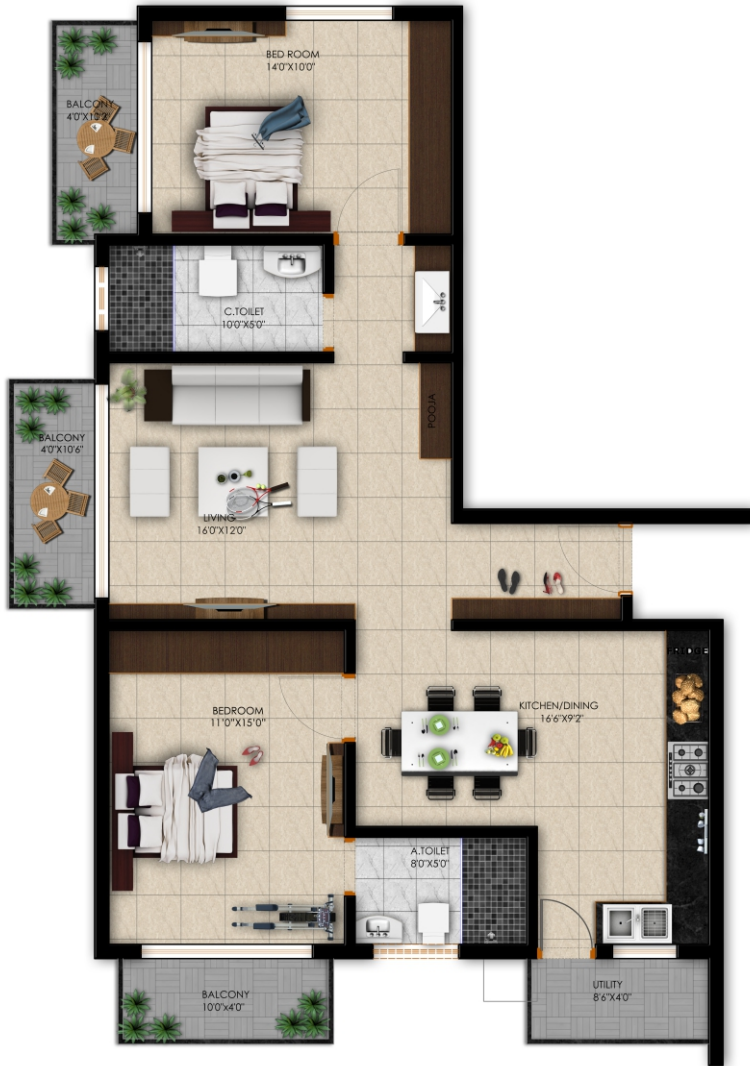
# Master Plan

### Disclaimer:

Aakar Properties reserves the rights to alter the plans. This brochure is for illustration purpose and should be used as a guide only. No information or images from this brochure may be reproduced without prior written approval from the owner.



## Super built up area - 1263 sq.ft



Typical A1, A2, A3

## Super built up area - 1263 sq.ft



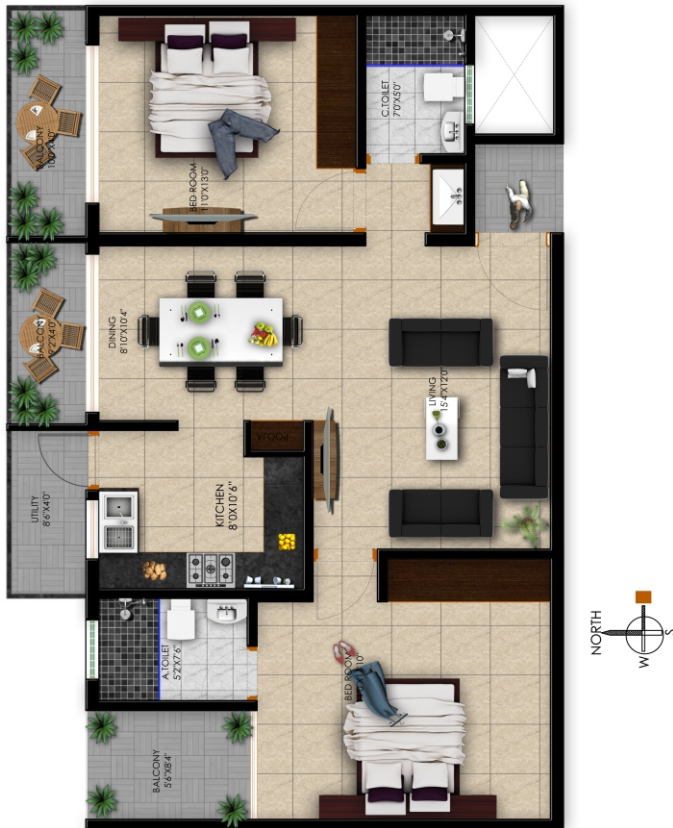
Typical C1, C2, C3

### Disclaimer:

Aakar Properties reserves the rights to alter the plans. This brochure is for illustration purpose and should be used as a guide only. No information or images from this brochure may be reproduced without prior written approval from the owner.



**Super built up area - 1197 sq.ft**



Typical B1, B2, B3

**Disclaimer:**

Aakar Properties reserves the rights to alter the plans. This brochure is for illustration purpose and should be used as a guide only. No information or images from this brochure maybe reproduced without prior written approval from the owner.

## Specification

### CIVIL & STRUCTURE

- RCC framed Structure designed for Seismic zone II
- Solid Concrete Block masonry ( Internal & External)

### PLASTERING

- All internal walls plastered with lime rendering
- External wall plastering with Cement mortar sand faced

### PAINTING

- Interior : walls finished with plastic emulsion paint
- Exterior : Walls finished with exterior Emulsion paint
- Wooden & metal surfaces : Finished with enamel paint

### FLOORING & DADOING

- 600 mm x 600 mm size Vitrified tile flooring for Living, Bed rooms & Kitchen
- Antiskid Ceramic tiles for Toilets & balconies.
- Ceramic tiles Dado up to 7'0" in Toilets
- Make for all Tiles : Kajaria/ Equivalent
- Cement Flooring for Basement

### COMMON AREAS

- Rustic Ceramic Tiles for Common areas, Balcony & Utility areas etc.,
- 20mm Granite with stainless steel railings for staircase

### KITCHEN

- 2' wide 20mm thick Black Granite kitchen platform
- Stainless steel sink having Double bowl Single drain of "Franke" or Equivalent make
- Ceramic tiles dadoing upto 2' 0" height above kitchen platform

### WATER SUPPLY

- Corporation & Bore well water to the building with underground and overhead tank of sufficient capacity.

## Specification

### TOILET- FITTINGS & ACCESSORIES

- Concealed plumbing with CPVC pipes of Supreme/Equivalent make
- C.P.Fittings (Jaquar / Equivalent)
- White glazed European water closet wall hung type (Hindware / Equivalent)
- Rectangular wash basin of white colour with granite counter slab, CP health faucet.

### DOORS & WINDOWS

- Main Door - Teak wood door frame with Solid Core flush door shutter, Both Side Teak Veneered & Polished
- Internal Doors -Hard wood door frame with bothside veneered solid core flush shutter
- Toilet doors - Hard wood frame with 100% boiling waterproof Solid core flush shutter
- Powder coated or Anodised 3 track Aluminium /UPVC Windows / Sliding doors

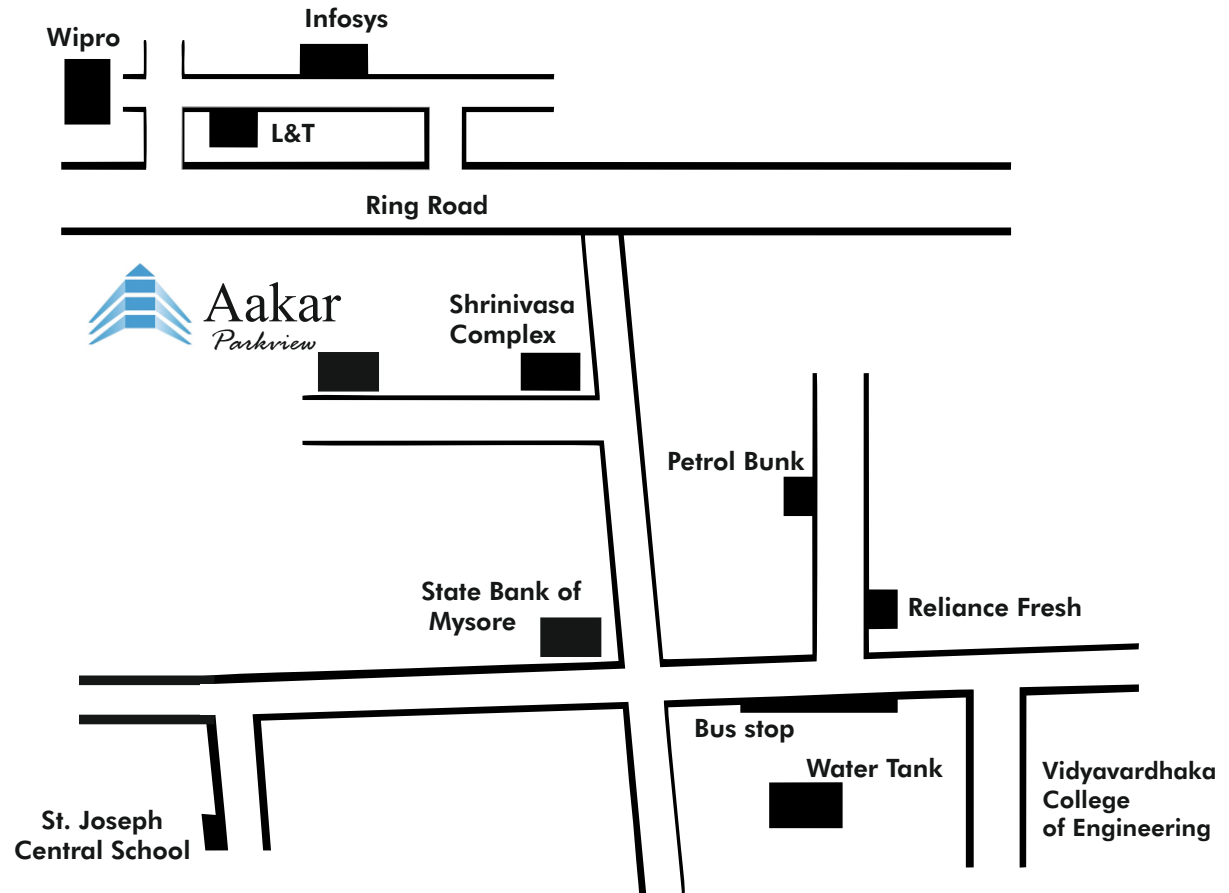
### ELECTRICAL

- Concealed Multistrand FRLS copper wire with modular switches of Anchor/equivalent
- T.V, Telephone, networking point& AC points in Living and all Bedrooms.

### LIFT

- 5 passenger Lift - Automatic

## Key Plan & Site Location



**Location: 8, 9 &10, Mahajana housing Co-operative Society,  
Vijayanagar 2nd Stage, Mysore**

**Call: 9632339900, 9632449900**

**Email: [info@aakarproperties.com](mailto:info@aakarproperties.com), [www.aakarproperties.com](http://www.aakarproperties.com)**

**Architects: Harishankar B.A Associates, #725/q, C & D Block , 2nd Cross,  
Vishwamanava Double Road West, Kuvempunagar, Mysore - 570023, Ph: 9448041160**